




# GLYSTRO: Curved Track Installation Range for Glystro 25 & 50

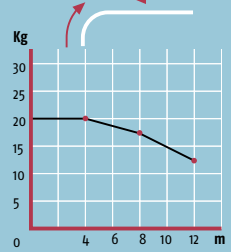
GLYSTRO®25		GLYSTRO®25 RTS
Weight limit for one way	20 kg for 12 m*	
Weight limit for two way	25 kg for 12 m*	
Average linear speed	20 cm/s	
Control options	DC switches & other Somfy DC control options	
Manual operation	Yes	Yes
Power supply	24 VDC +/- 10%	24 VDC +/- 5%
Power plug	Female 2 mm jack	
Control socket	Not applicable	
End-of-travel setting	Automatic	Automatic
Other settings	n/a	n/a
Standards		

kg: end product weight m: length of the track

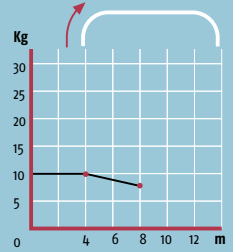
Arch track one way draw (radius of 50cm)



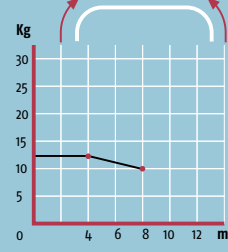
Arch track two way draw (radius of 50cm)



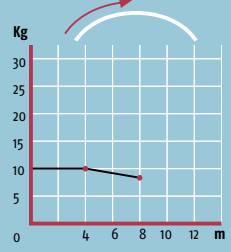
Arch track one way draw (radius of 50cm)



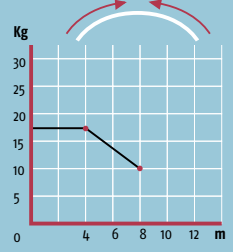
Arch track two way draw (radius of 50cm)






Arch track one way draw (radius of 500cm)

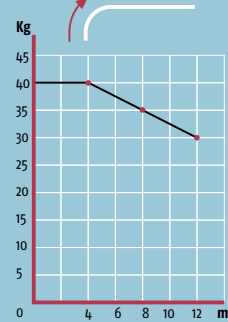


Arch track two way draw (radius of 500cm)

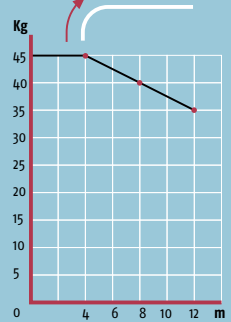


GLYSTRO®50 IR		GLYSTRO®50 RTS
Weight limit for one way	40 kg for 12 m*	
Weight limit for two way	50 kg for 12 m*	
Average linear speed	20 cm/s with "soft stop & soft start"	
Control options	Dry Contacts	
Manual operation	Yes	Yes
Power supply	24 VDC +/-10%	24 VDC +/-10%
Power plug	Female 2 mm jack	
Control socket	2 RJ11 connectors	
End-of-travel setting	Automatic	Automatic
Other settings	Change of direction	Change of direction
Standards		

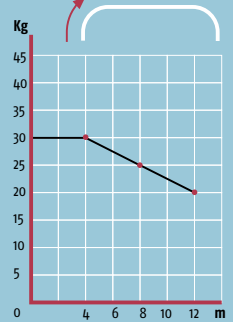
Arch track one way draw (radius of 30cm)



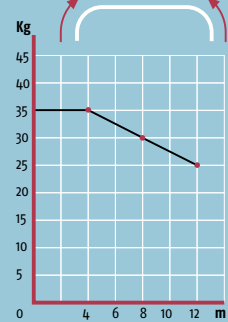
Arch track two way draw (radius of 30cm)



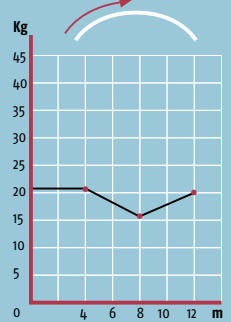
Arch track one way draw (radius of 30cm)



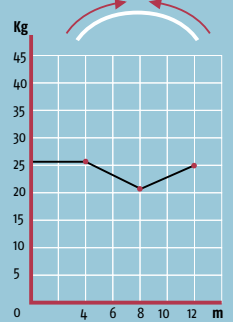
Arch track two way draw (radius of 30cm)



Arch track one way draw (radius of 300cm)



Arch track two way draw (radius of 300cm)



\*The maximum capacity can vary according to the length and the shape of the rail. Please consult Somfy.